

SMARTER . FASTER . TOGETHER

SELEP AREA MAP



Our Economic Strategy Statement focuses on priorities shared across the South East and those where we can, by working together, make the biggest difference.

Our commitment is to work for a more productive and prosperous south east in which everyone has the opportunity to succeed.



OUR AMBITIONS

WORK SMARTER:
Increasing the productivity of the South East LEP area

DELIVER FASTER:
Accelerating housing and infrastructure delivery to meet planned growth

WORK BETTER TOGETHER:
Collaborating across the Greater South East, with Government and with business



PRIORITY 1

CREATING IDEAS AND ENTERPRISE

Creating, adapting and adopting new ideas is at the heart of our ambition for a 'smarter' economy. This means supporting our innovative capacity in our 'leading edge' businesses – it also means increasing the opportunities for creativity across the economy, enabling businesses with the potential for growth to expand

PRIORITY 2

DEVELOPING TOMORROW'S WORKFORCE

A skilled workforce will be vital in delivering the productivity gains that this strategy demands. But higher skills are also the route to better pay, better jobs, and better progression in work.



PRIORITY 3

ACCELERATING INFRASTRUCTURE

To deliver our ambitions for a smarter faster economy, we must ensure that we secure the right infrastructure to support future growth. Through our growth deal, we have developed a strong track record, although infrastructure funding gaps remain significant.



PRIORITY 4

CREATING PLACES

The scale of growth that the South East will see over the coming decade is significant, and some of the changes facing businesses and people in work will be transformational. But greater productivity is only useful if it improves living standards and the communities within which we live: as well as delivering 'growth', we need to create places to which South East residents and businesses aspire.

PRIORITY 5

WORKING TOGETHER

While the South East LEP covers a large and complex geography in its own right, it is by no means isolated. Our links to London and other parts of the Greater South East are vital, and we will need to build on our wider regional connections.



Follow us and be part of the journey:
SMARTER, FASTER, TOGETHER

@southeastlep

www.linkedin.com/company/south-east-lep

www.southeastlep.com

hello@southeastlep.com

BUSINESS PARKS

ESSEX

- 1 Harlow Enterprise Zone; including Harlow Science Park, Kao Park, Templefields
- 2 Chesterford Research Park
- 3 Southend Airport Business Park
- 4 Stansted Business Park
- 5 High House Production Park
- 6 Thames Enterprise Park
- 7 Knowledge Gateway, Colchester
- 8 Skyline 120 & Horizon 120

KENT

- 9 North Kent Enterprise Zone; Kent Medical Campus
- 10 North Kent Enterprise Zone; Innovation Park Medway
- 11 Discovery Park Enterprise Zone
- 12 Kings Hill
- 13 Eureka Park
- 14 Crossways
- 15 Prologis Park
- 16 The Bridge
- 17 Manston Business Park
- 18 EuroKent Business Park
- 19 Waterbrook Park
- 20 Eurolink
- 21 Kemsley Fields
- 22 London Medway Commercial Park
- 23 Kent Science Park
- 24 Altira Business Park

EAST SUSSEX

- 25 Swallow Business Park
- 26 Bexhill Enterprise Park
- 27 Newhaven Enterprise Zone
- 28 Sovereign Harbour Innovation Park
- 29 North Queensway Innovation Park

BUSINESS

ESSEX

- 1 Hutchison Ports Harwich
- 2 DP World
- 3 Ford, Dunton Research Centre
- 4 Case New Holland
- 5 Public Health England
- 6 Teledyne ezv
- 7 BAE Systems
- 8 Leonardo UK Ltd
- 9 Olympus Keymed
- 10 Think BDW
- 11 Illumina

KENT

- 12 Peel Ports
- 13 Hutchison Ports
- 14 East Malling NIAB Research Centre
- 15 Maidstone Studios
- 16 Pfizer
- 17 BAE Systems
- 18 Saga
- 19 P&O Ferries
- 20 Abbott Laboratories
- 21 Laing O'Rourke
- 22 Shepherd Neame
- 23 Gallagher Group
- 24 Chapel Down Winery, Tenterden
- 25 Biddenden Vineyards
- 26 Cummins Power Generation
- 27 Motor Sport Vision
- 28 FM Conway
- 29 Axa PPP
- 30 Church & Dwight

EAST SUSSEX

- 31 Trifast plc
- 32 Hastings Direct
- 33 Harvey & Son (Lewes) Ltd
- 34 Gardners Books
- 35 Jemsons of Rye
- 36 Rathfinny Wine Estate

EDUCATION

ESSEX

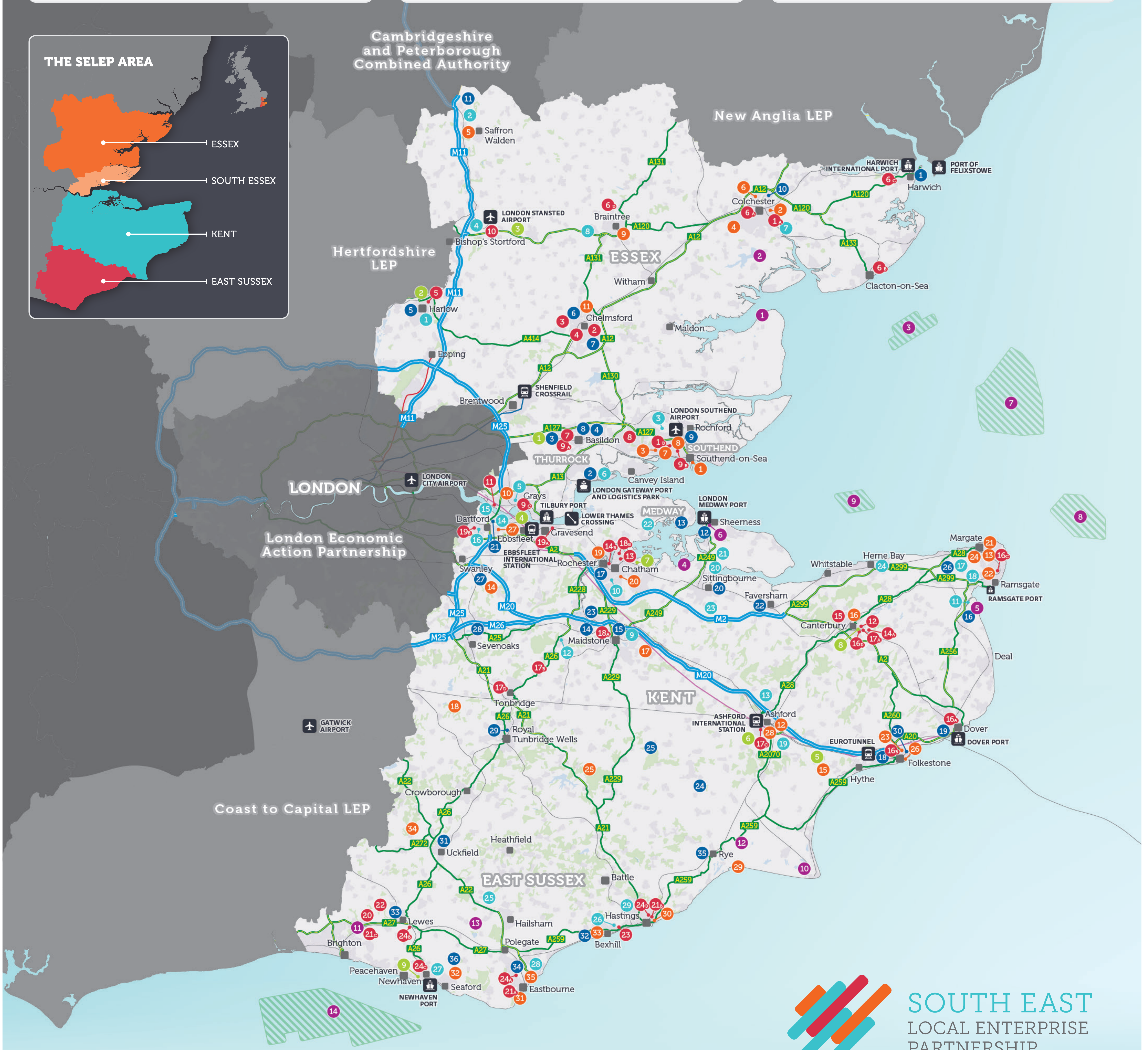
- 1 University of Essex: (A) Colchester Campus (B) Southend Campus
- 2 Anglia Ruskin University
- 3 Writtle College
- 4 Chelmsford College
- 5 Harlow College
- 6 Colchester Institute: (A) Colchester Campus (B) Clacton Campus (C) Energy Skills Centre (D) Innovation Centre
- 7 Prospects College of Advanced Technology (PROCAT)
- 8 USP College
- 9 South Essex College: (A) Basildon (B) Southend (C) Thurrock
- 10 Stansted Airport College (Harlow College)
- 11 National College for the Creative Industries

KENT

- 12 Canterbury Christ Church University
- 13 Universities at Medway - University of Greenwich - University of Kent - Canterbury Christ Church University
- 14 University for the Creative Arts: (A) Canterbury Campus (B) Medway Campus
- 15 University of Kent
- 16 EKC Group (East Kent College): (A) Dover Campus (B) Folkestone Campus (C) Broadstairs Campus (D) Canterbury Campus
- 17 Hadlow Group: (A) Canterbury (B) Hadlow (C) Ashford (D) Tonbridge
- 18 Mid Kent College: (A) Maidstone (B) Medway
- 19 North Kent College: (A) Gravesend (B) Dartford

EAST SUSSEX

- 20 University of Sussex
- 21 University of Brighton: (A) Eastbourne Campus (B) Falmer Campus
- 22 Plumpton College
- 23 Bexhill College
- 24 Sussex Downs College: (A) Eastbourne (B) Lewes (C) Newhaven (D) East Sussex College



SOUTH EAST
LOCAL ENTERPRISE
PARTNERSHIP

CULTURAL & LEISURE

ESSEX

- 1 Southend Pier & Adventure Island
- 2 Firstsite
- 3 Hadleigh Park
- 4 Colchester Zoo
- 5 Audley End House
- 6 Colchester Castle
- 7 Metal & Netpark
- 8 Radical Essex, Focal Point Gallery
- 9 Freeport Braintree Outlet
- 10 Lakeside Shopping Centre
- 11 Bond Street, Chelmsford

KENT

- 12 Jasmin Vardimon Dance Laboratory
- 13 Turner Contemporary Margate
- 14 Brands Hatch
- 15 Port Lympne Reserve
- 16 Canterbury Cathedral
- 17 Leeds Castle
- 18 Hever Castle
- 19 Historic Dockyard Chatham
- 20 Nucleus Arts
- 21 Resort Artist Studios Margate
- 22 Meltdowns Foundry Ramsgate
- 23 Creative Quarter Folkestone
- 24 Dreamland, Margate
- 25 Bedgebury Pinetum
- 26 Folkestone Harbour Arm
- 27 Bluewater Shopping & Leisure
- 28 Ashford Designer Outlet

East Sussex

- 29 Camber Sands
- 30 Jerwood Gallery
- 31 Townner Gallery
- 32 Seven Sisters Country Park
- 33 De La Warr Pavilion
- 34 Sheffield Park and Garden
- 35 The Beacon Shopping Centre

ENERGY

ESSEX

- 1 Bradwell Nuclear Power
- 2 Langenhoe Solar Farm
- 3 Gunfleet Sands

KENT

- 4 Orchard Community Solar Energy
- 5 Combined Heat and Power plant Kent (Estover Energy)
- 6 Port of Sheerness Wind Farm
- 7 London Array Offshore Wind Farm
- 8 Thames Offshore Wind Farm
- 9 Kentish Flats Offshore Wind Farm
- 10 Dungeness B Nuclear Power Station

East Sussex

- 11 The Keep biomass boiler & building-integrated solar
- 12 Little Cheyne Court on-shore wind farm
- 13 Berwick Solar Farm
- 14 Rampion Southern Array Offshore Wind Farm

DEVELOPMENT SITES

ESSEX

- 1 Dunton Hills Garden Village
- 2 Giltton Park Estate
- 3 North Essex Garden Communities

KENT

- 4 Ebbsfleet Garden City
- 5 Otterpool Park Garden Town
- 6 Chilmington Garden Village
- 7 Rochester Riverside
- 8 Mountfield Park

EAST SUSSEX

- 9 Newhaven EZ

Examples listed here are illustrative of economic themes and features across our area. This is by no means an exhaustive list. If you would like further information please contact us: hello@southeastlep.com