

South East LEP

Creating the most enterprising
economy in England

Annual Report 2014/15

South East
Local Enterprise Partnership





Chairman's Review

It has been a huge year for the South East Local Enterprise Partnership. Over the last 12 months, we have struck a £488m Growth Deal with Government, released significant European funding and laid the foundations for our SEFUND investment fund.

At the same time, we have undergone a major delivery review and taken steps to embed our federal model firmly into the way we operate, with local areas setting local priorities and in charge of local delivery.

Our Growth Deal

In July, the first £442m installment of our Growth Deal was announced in response to our Growth Deal and Strategic Economic Plan submitted at the end of March. Our Growth Deal agreed investment in local growth schemes including 33 transport projects to enable new developments and address pinch points and congestion, capital funding to support new skills and the development of new Growth Hubs for business.

This funding was followed by a further £46m in January in a Growth Deal extension that clearly reflected local priorities, including new investment in Purfleet and Chelmsford, around Rochester and Southend airports, in Dover and Folkestone and in Bexhill and Eastbourne, as well as cross-LEP support of our coastal housing renewal programme.

Funding for skills

With £22m won for Skills Capital projects over the next two years, we were anxious to ensure this funding was with colleges at the very beginning of the new financial year and developed an open competition shaped around the needs of business. With economic impact a major factor, we have awarded 5 forward-looking colleges £18m to invest in their estates linked to our high-skill business sectors. A further £4m is now to be allocated for skills equipment - available both to FE Colleges and

some private providers – judged against the very same, stretching business-focused criteria.

European funding for jobs and growth

With funding for jobs and growth at its heart, our £180 European programme for the SE LEP area also began in March, following considerable development and consultation over the last two years. Calls for innovation, competitiveness and low carbon business funding, the Thurrock Youth Employment Initiative and support for rural SMEs (one of only 5 such calls in the country) will see over £15m released to support growth, monitored closely and guided strategically by our SE LEP area European (ESIF) Committee. More calls for projects will soon be underway.

Investing for growth

Meanwhile, for me, one of the most exciting developments has been the establishment of our SEFUND investment fund with support from the Cabinet Office that will bring new expertise to support the development of local projects, and new rigour to the re-investment of our £50m Growing Places Fund and other potential funding. Already attracting market interest, SEFUND will be a rolling real estate fund invested against an agreed strategy in local capital schemes to accelerate their delivery.

Governance and assurance

Underpinning all that we do we acknowledge must be a governance structure that gives confidence to Government that public money is being spent appropriately and wisely. Over the Summer, we embarked on a wide-ranging Delivery Review undertaken by Irene Lucas CBE, whose recommendations we responded to in December in agreeing our new Assurance Framework and Accountability Board. Providing an overarching framework for the LEP's operation, it also firmly embeds our federal model, one built on strong business/council partnerships in East Sussex, Essex, Kent, Medway, Thurrock and Southend.

SE LEP Board and Secretariat

As we look back on a very full year, I would like to thank all my Board Members representing their federal areas, our representatives from both Higher and Further Education and especially my Vice Chairmen, George Kieffer, Geoff Miles and Graham Peters for – amongst much else – their work on European Funding, the Accountability Board and SEFUND respectively.

I would also like to pay tribute to Derek Godfrey who stood down as Vice Chairman but thankfully remains on the SE LEP Board and to remember the very sad loss of Jeremy Birch, SE LEP Board Member and Leader of Hasting Council, whose wise presence continues to be missed in so much of what we do.

The year has seen changes in our Secretariat too, with David Godfrey joining full-time as Director, Adam Bryan seconded as Deputy, Lucy Payne joining as Programme Manager and Mike Rayner joining as Skills lead, with Lorraine George continuing to lead on European funding. Meantime Zoe Gordon left us to have her baby while – for our Accountable Body – Suzanne Bennett returned after the birth of her baby to take back over from Paul Keegan.

I am extremely grateful to them all for their tireless work, as I am to our Whitehall sponsors who have been constant in their support.

Into the future

As Chairman for last two years, I believe we have made huge strides as a partnership – private and public sectors, Further and Higher Education working together for growth – of which all we can be proud.

Whatever the future and whatever structures may best fit, we can look back on a highly successful year knowing that

firm foundations are now in place in pursuit of our shared objective of new jobs, new homes and new business growth.



Peter Jones
Chairman, South East Local Enterprise Partnership



Our Growth Deal

"Giving local communities the power and the money to unlock growth and development and make the spending decisions that work for them is a key part of our long-term economic plan to secure a brighter future for Britain and ensure a recovery for all. That's what Growth Deals are all about, backing local people and investing in the infrastructure, housing and skills that will drive forward local economies, create more jobs and opportunities for hardworking people and supercharge all parts of our country"

**Rt Hon David Cameron MP,
Prime Minister**

The SE LEP Growth Deal with Government brings almost £500m of investment to East Sussex, Essex, Kent, Medway, Southend and Thurrock with the potential of more investment to come. Our Growth Deal also brings new influence over transport, skills and housing programmes

Over the lifetime of the Deal (2015-2021), we aim to create up to 45,000 new jobs and see 23,000 new homes built - our wider ambitions are higher still. The Deal has the potential to generate £700m of public and private investment and brings new responsibilities and flexibilities.



Executive Summary



The South East Growth Deal agreed on 7 July 2014, and expanded on 29 January 2015 will include big investments in local roads and rail which will help open up major new sites for housing and business development. The Deal will support a simpler, streamlined service for businesses to enable them to grow and prosper, as well as investment for colleges and training to boost the skills of local people to make them better able to take advantage of new career opportunities. The key features of the deal are:

- The creation of up to 45,000 new jobs;
- The building of 23,000 new homes;
- The potential to generate a further £700m public and private investment;
- Significant new investment along key road and rail routes, improving journey times and opening up new sites for jobs and homes – along the A414 and A127 in Essex, Bexhill in East Sussex, and a number of town centre schemes in Kent and Medway. On the back of these investments the South East LEP will come forward with proposals to deliver jobs and homes in other places – at Purfleet, Folkestone; and other coastal towns;
- Development of new business parks;
- Investment in colleges and other training providers, helping to raise skill levels and ensure that local people can compete for jobs in a fast-changing economy;
- Support for the development of new and growing businesses through new business environments in Southend, Rochester, Bexhill and Eastbourne by providing a simpler and more streamlined service to help them grow and prosper. The South East Local Enterprise Partnership brings together business, local government and education partners from the counties of Kent, Essex and East Sussex and the unitary authorities of Medway, Thurrock and Southend-on-Sea.

Our signing of this document confirms our joint commitment to ensure the full implementation of the South East Growth Deal, proposed by the South East LEP. To ensure implementation and demonstrate success we will jointly track progress against milestones and outcomes.

*Rt. Hon The Baroness Kramer Minister of State (Department for Transport).
Peter Jones CBE – Chairman South East Local Enterprise Partnership*

Local Growth Fund Projects

Local Growth Deal Round 1 Projects	Area	£m
Newhaven Flood Defences	East Sussex	1.5
Eastbourne BC Housing Revenue Account	East Sussex	0.4
Hailsham/Polegate/Eastbourne Sustainable Transport Corridor	East Sussex	2.1
Eastbourne and South Wealden Walking and Cycling LSTF package	East Sussex	8.6
Queensway Gateway Road	East Sussex	15.0
Hastings and Bexhill Junction Capacity Improvements Package	East Sussex	6.0
Hastings and Bexhill LSTF Walking and Cycling Package	East Sussex	6.0
Hastings and Bexhill LSTF Walking and Cycling Package	East Sussex	6.0
Eastbourne Town Centre LSTF	East Sussex	6.0
A22/A27 Junction Improvement Package	East Sussex	4.0
North Bexhill Access Road	East Sussex	5.0
Colchester Broadband Infrastructure	Essex	0.2
Colchester LSTF	Essex	2.0
Colchester Integrated Transport Package	Essex	5.0
Colchester Town Centre	Essex	5.0
Thames Gateway South Essex LSTF – Essex	Essex	3.0
A414 Pinch Point Package: First Av and Cambridge Rd Junction	Essex	10.0
A414 Maldon to Chelmsford RBS	Essex	2.0
Chelmsford Station/ Station Square/ Mill Yard	Essex	3.0
Basildon Integrated Transport Package	Essex	9.0
Colchester Park and Ride and Bus Priority Measures	Essex	5.8
A131 Chelmsford to Braintree	Essex	3.7
A414 Chelmsford to Harlow	Essex	3.7
A133 Colchester to Clacton	Essex	2.7
A131 Braintree to Sudbury	Essex	1.8
Beaulieu Park Railway Station	Essex	12.0
A127 Improvements	Essex/ Southend	35.6
Camland Hythe Ltd	Kent	4.8
Tonbridge Town Centre	Kent	2.4
Sittingbourne Town Centre Regeneration	Kent	2.5
M20 Junction 4 Eastern Overbridge	Kent	2.2
A26 London Rd/Speldhurst Rd/Yew Tree Rd	Kent	1.8
Kent Thameside LSTF	Kent	4.5
Maidstone Gyratory Bypass	Kent	4.6
Kent Strategic Congestion Management Programme	Kent	4.8
North Deal Transport Improvements	Kent	0.8
Kent Rights of Way Improvement Plan	Kent	1.0
Kent Sustainable Interventions Programme	Kent	3.0
West Kent LSTF	Kent	4.9
Folkestone Seafront: Onsite Infrastructure and Engineering Works	Kent	0.5
A28 Chart Road	Kent	10.2
Maidstone Integrated Transport	Kent	8.9
Sturry Link Road	Kent	5.9
Thanet Parkway	Kent	10.0
Rathmore Road Link – Gravesend	Kent	4.2
A28 Sturry Rd Integrated Transport Package	Kent	0.3
Maidstone Sustainable Access to Employment Areas	Kent	2.0
M20 Junction 10a	Kent	19.7
A226 London Rd/B255 St Clements Way	Kent	4.2
Kent and Medway Growth Hub	Kent/ Medway	6.0
A289 Four Elms Roundabout to Medway Tunnel	Medway	9.0
Strood Town Centre Journey Time and Accessibility Improvements	Medway	9.0
Chatham Town Centre Place-Making and Public Realm Package	Medway	4.0
Medway Cycling Action Plan	Medway	2.5
Medway City Estate Connectivity Improvement Measures	Medway	2.0
Skills Capital Programme	Pan LEP	22.0
Growth Hub Revenue Funding	Pan LEP	0.8
LTB Other	Pan LEP	4.9
LTB monies to be allocated	Pan LEP	5.5
RGF Previously Committed	Pan LEP	3.6
Southend SCAAP/Growth Hub	Southend	6.7
Thames Gateway South Essex LSTF – Southend	Southend	1.0
Southend and Rochford SCAAP – Transport Package	Southend	7.0
Thames Gateway South Essex LSTF - Thurrock	Thurrock	1.0
Thurrock Cycle Network	Thurrock	5.0
London Gateway/Stanford-le-Hope	Thurrock	7.5
A13 Widening - Development	Thurrock	5.0
A13 Widening	Thurrock	75.0
Total		441.9

Local Growth Deal Round 2 Projects totalling £46.1m	Area	£m
Bexhill Enterprise Park	East Sussex	
Swallow Business Park	East Sussex	
Sovereign Harbour Innovation Park	East Sussex	
Chelmsford City Growth Area Scheme	Essex	
Chelmsford Flood Alleviation Scheme	Essex	
Dover Western Dock Revival	Kent	
Ashford International Rail Connectivity (Ashford Spurs)	Kent	
Westhanger Lorry Park	Kent	
Rochester Airport	Kent	
Folkestone Seafront	Kent	
Housing Regeneration (Coastal Group)	Pan LEP	
Southend and Rochford Joint Area Action Plan	Southend	
Purfleet Centre	Thurrock	
Total		46.1

A summary of activities and achievements of the South East

APR 2014

- Assisted Area Status confirmed to include wards within Tendring, Medway, Hastings, Rother, Dover, Swale, and Thanet.

MAY 2014

- Centre for Offshore Renewable Engineering (CORE) status expanded to include Harwich and Brightlingsea.



JUN 2014

- Business Minister Michael Fallon addresses Swale Regeneration Conference recognising local growth opportunities and SE LEP's federal model
- Businesses from across Essex, East Sussex, Kent, Medway, Southend and Thurrock come together in Maidstone to back SE LEP Growth Deal and SEFUND proposals



JUL 2014

- Coastal MPs summit in Westminster in support of SE LEP Growth Deal proposals
- Lord Heseltine addresses SE LEP Housing Summit in Ebbsfleet Valley launching our "Building the Future" document with Localis
- Government announces £442m SE LEP Growth Deal launched at London Gateway by Cabinet Minister Justine Greening
- Discovery Park celebrates its second anniversary in event attended by Minister for Universities & Science Greg Clark
- Detailed planning announced by Transport Secretary on two remaining options for Lower Thames Crossing



AUG 2014

- Past Permanent Secretary Irene Lucas CBE begins SE LEP Delivery Review with series of local meetings
- SE LEP supports 9 local LEADER proposals to establish Local Action Groups to access funding for rural growth across the SE LEP area
- Communities Secretary Eric Pickles announces Michael Cassidy CBE as Chairman Designate of Ebbsfleet Development Corporation



SEPTEMBER 2014

- Further Growing Places Fund allocations agreed by SE LEP Board for Discovery Park and Harlow Enterprise Zones and for the University of Essex's Parkside Office Village
- SE LEP Board agrees to develop SEFUND investment fund and establishes SEFUND Shadow Board to oversee
- Estuary Airport ruled out by Airports Commission



OCT 2014

- Shadow EU ESIF Committee has inaugural meeting with input from Departments of Communities & Local Government, Work & Pensions and Environment, Food & Rural Affairs



NOV 2014

- Publication of SE LEP Skills Strategy in support of £22m SE LEP Skills Capital funding competition
- Civil Society discussion with Minister Rob Wilson in Medway who announces intention to hold social investment event with SE LEP
- Social inclusion consultation event with Big Lottery and Cabinet Office
- SE LEP presents at Thames Gateway South Essex Annual Housing Conference
- DART Charge introduced for Dartford-Thurrock Crossing



st LEP in 2014/15

DEC 2014

- Opportunities for Social Enterprise identified with launch and publication of "Jobs and Innovation – making the South East the Capital of Social Enterprise"
- Natalie Elphicke addresses SE LEP Housing Conference hosted by George Kieffer at Anglia Ruskin University
- Adam Bryan seconded to SE LEP Secretariat as Deputy Director
- Response to SE LEP Delivery Review agreed by SE LEP Board, embedding federal arrangements

JAN 2015

- Further £46.1m agreed with Government in multi-million extension to SE LEP Growth Deal
- Lucy Payne joins SE LEP Secretariat as Programme Manager
- Skills Summit in London with Department for Work & Pensions, Skills Funding Agency and the Big Lottery to shape ESF funding programme



FEB 2015

- Mike Rayner joins SE LEP Secretariat as Skills Lead
- £18m Skills Capital funding awarded to Harlow College, Colchester Institute (the College at Braintree), Hadlow College (Ashford campus), South Downs College (Lewes campus)



MARCH 2015

- Transport Minister Baroness Kramer officially signs £488m SE LEP Growth Deal to transform our transport and business infrastructure
- Minister for Civil Society Rob Wilson speaks at SE LEP Social Investment Round Table in Westminster
- £15m funding released from ESIF programme in first funding call for SME support, business innovation, low carbon schemes, Youth Employment Initiative and focussed support for rural SMEs
- Secretary of State announces Ebbsfleet Development Corporation Board members
- SE LEP attends Mayor of London's SE Summit on London Plan
- SE LEP CORE group represented at EWEA Offshore 2015 Conference and Exhibition in Copenhagen in drive for new business opportunities



MARCH 2015

- SE LEP Board agrees:
- SEFUND feasibility and design reports including investment strategy
 - Independent Technical Evaluation process for scheme approval developed with federal areas
 - Assurance Framework responding to Irene Lucas Delivery Review proposals
 - Funding for SE LEP Centre for Offshore Renewable Engineering (CORE) group
 - And supports Royal British Legion Industries presentation on social enterprise and social value



APR 2015

- Launch of SE LEP Growth Hub as landing site goes live
- SE LEP Twitter followers surge past 2,500
- Growth deal funding secured annually in advance following new assurance framework



MAY 2015

- Local workshops and surgeries arranged with Department of Communities & Local Government to give expert guidance and advice to partners in developing projects for ERDF business support
- General Election sees SE LEP area MPs appointed to key Cabinet roles



JUNE 2015

- Westminster launch of £82.5m ESIF Funding for skills and employability with the Big Lottery, the Department of Work & Pensions and the Skills Funding Agency and introduction of "Escalator of Opportunity" for funding opportunities
- Launch of national Housing & Finance Institute with Natalie Elphicke
- Housing Summit with 7 LEPs, local authorities, housing associations, contractors and Government to discuss collaboration in accelerating new housing



Skills Capital

In our SE LEP Growth Deal, £22m was committed by Government to support Skills Capital projects across the LEP area - an £18m Skills Capital Fund and a further £4m is now available for Skills equipment. In addition, a number of commitments and responsibilities to influence wider skills provision were included.

Our £18m SE LEP Skills Capital Fund is being used to maintain and develop the highest quality FE College estate and has been allocated following a competition focussed strongly on supporting business and jobs. A further £4m is now available for skills equipment.

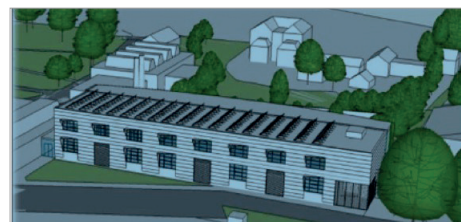
“Our priorities are clear and unequivocal and lay down the challenge to providers to work in partnership with business to address the skills shortages through targeted capital investment and curriculum innovation and design.”

Graham Razey, SE LEP Board Member for FE & Skills

College	Project	Amount
Harlow College	New Advanced Manufacturing and Engineering Centre (AMEC)	£2,500,000
Colchester Institute	Embracing STEM at The College at Braintree	£4,000,000
Hadlow College	Ashford College (Phase 1)	£9,800,000
East Kent College	New Technical Education facilities (engineering, logistics, service industries)	£1,186,750
Sussex Downs College	Refurbishment of science facilities at Lewes campus.	£161,571



Harlow College



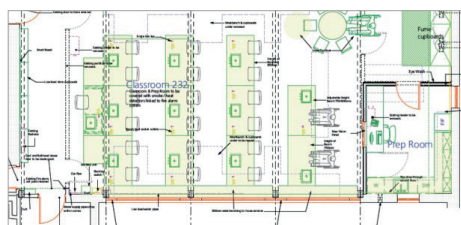
Colchester Institute



Hadlow College



East Kent College



Sussex Downs College

In addition, funding is available to support skills through the our EU funding programme programme, primarily through the match funding arrangements with the Skills Funding Agency and through similar arrangements with the Department for Work and Pensions and Big Lottery. (see facing page)



The South East Business Hub (www.southeastbusiness.org.uk) is SELEP's Growth Hub - the one-stop-shop for business support which Government requested of all LEPs, and supported initially through the Local Growth Fund. Modelled entirely on the basis of the federated model, the South East Business Hub is built on the success of the first year of Business Southend, a hub which is recognised as best in class by the sponsoring government department. While the local hubs will deliver services to businesses – through BEST (Business Essex, Southend and Thurrock); Business East Sussex and the Kent and Medway Growth Hub, the SELEP level provides the single landing page; the coordination of performance metrics; a link to national products and services; and a new route for SMEs to access wider SELEP initiatives.

EU Funding

This year has seen great progress on the £180m European Structural and Investment Funds (ESIF) with the first calls for projects launched in March and with a clear programme of funding calls to follow.

Our European funding comes from 3 sources: European Regional Development Fund (ERDF) for business growth worth £82.5m; European Social Fund (ESF) for skills and employability worth £82.5m; and European Agriculture Fund for Rural Development (EAFRD) worth £14.5m.

While we do not physically hold the funding at SE LEP all must fit with our ESIF Strategy and Implementation Plan agreed this year to ensure all investment in the area is co-ordinated for growth and greatest impact.

Business growth (ERDF): Innovation, competitiveness and low carbon

- First £12m launched in March to support research/innovation, SME competitiveness and low carbon schemes. Next calls will be focused on our Growth Hubs, Financial Instruments (grants and loans) and on adding local value from national Government (BIS) business support services (eg UK TI).

Skills and employability (ESF): An “escalator of opportunity”

- Built around an “escalator of opportunity” to move people closer to or help them into work or higher skilled employment, this will be part of our next investment call with co-investors the National Lottery, the Department for Work & Pensions and the Skills Funding Agency. It follows hard on the heels of the £1.3m already made available for the Thurrock Youth Employment Initiative.

support, tourism, renewables and broadband

- A dedicated rural business fund (rural businesses can also apply for all the above), project calls will be closely linked to the priorities of our SE LEP Rural Strategy agreed in March. We are also working closely with local LEADER rural groups to ensure investment is complementary.

Community-led local development (CLLD)

ERDF and ESF funding may also be released in support of community-led development where funding is invested in local groups for grass roots initiatives and targeted on the most deprived areas in the country. Six SE LEP areas are currently interested in bidding for this funding.

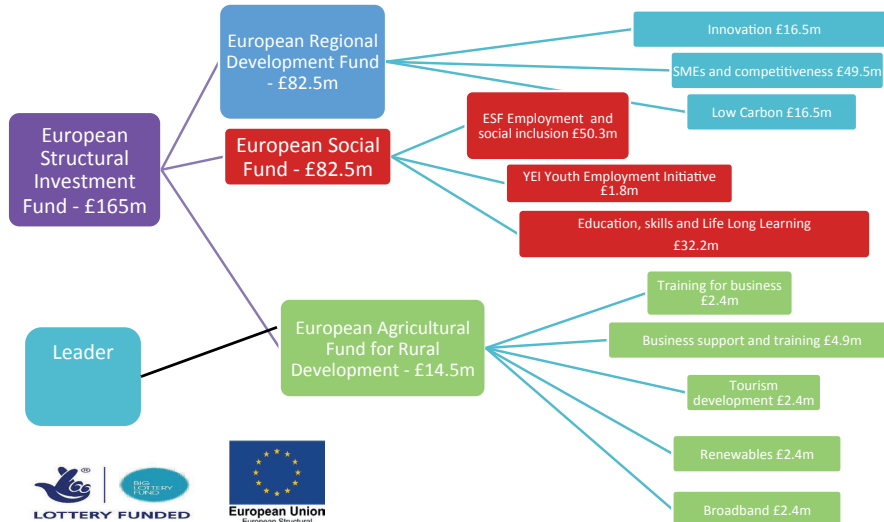
ESIF Committee

While funding decisions are ultimately through our Government Department sponsors, through our SE LEP area European ESIF Committee we can influence these decisions strongly according to our strategic priorities and direct both size and timing. Chaired by our SE LEP Vice Chair George Kieffer, the ESIF Committee is constituted against national guidelines for membership and is supported by the Department for Communities and Local Government. There are geographical and sectoral representatives from across the SE LEP area.

Project pipelines and investment profiles

It is vital that we continue to promote and encourage programmes of project development to ensure funding is spent according to profile. The ESIF programme is national which means that unspent funding can be moved to other areas in the UK – equally, good investment could encourage further funds to be deployed here. To help develop the project pipeline and support local areas and the SE LEP Secretariat, a bid for technical assistance has been made in June.

South East European Structural Investment Fund (ESIF) Strategy



Investing for growth: Growing Places Fund and SEFUND

Growing Places Fund

The Government's Growing Places Fund (GPF) is designed to accelerate developments that may have stalled as a result of a restricted financial climate, to enable the creation of new jobs and homes.

Out of a national pot of £500m, SELEP received £49m to help support schemes across our area.

GPF Projects as at 30th June 2015	Area	Allocation £m
Priory Quarter Phase 3	East Sussex	7.0
North Queensway	East Sussex	1.5
Bexhill Business Mall	East Sussex	6.0
Sovereign Harbour	East Sussex	5.3
Parkside Office Village	East Sussex	3.3
Chelmsford NE Urban Expansion	Essex	1.0
Harlow – Enterprise West Essex	Essex	3.5
Live Margate	Kent	5.0
Workspace Kent	Kent	1.5
Discovery Park	Kent	5.7
Rochester Riverside	Medway	4.4
Chatham Waterfront	Medway	3.0
Grays Magistrates	Thurrock	1.4
Harlow Enterprise Zone Revenue Grants	Harlow	1.2
Total		49.8

SEFUND

SEFUND is our real estate investment fund for the South East LEP area of East Sussex, Essex, Kent, Medway, Southend and Thurrock.

Beginning with management of our £50m Growing Places Fund, our ambition is to build the investment fund significantly both at fund and project level attracting new investment for projects across the SE LEP area. Future investments will be made against a clear investment strategy agreed at the SE LEP Board.

As a concept, SEFUND was introduced in our Strategic Economic Plan submitted to Government in March 2014. Further work continued to develop the potential of such a fund following our Growth Deal announcement in July 2014 and the Government's commitment to "work with the LEP to help deliver the Fund and bring forward an implementation plan".

On 26th September, the SE LEP Board agreed to the establishment of a SEFUND Shadow Board to oversee the design and feasibility stages of SEFUND. CBRE and Pinsents were appointed to complete this work with proposals presented to the SE LEP Board in March 2015. The work has continued to attract strong encouragement from Government and has already attracted the interest of institutional and other niche investors as well as developers



Provisional Financial Position - Year-Ending 31st March 2015

Commentary on Provisional Financial Results

Our financial year 2014/15 ended on 31st March 2015. The Financial Statements will be submitted to external audit scrutiny and, subject to satisfactory completion of the audit, will be presented to the Accountability Board for sign off. The information set out herein has yet to be audited and there may be minor changes between this position and the final report.

Table 1 - Income

	FY Actual £'000	FY Budget £'000	Over / (Under) £'000
Core grant income	(529)	(551)	22
Local authority contributions	(196)	(200)	4
Interest Received	(181)	-	(181)
Transport Grant utilisation	(45)	(65)	20
GPF grant utilisation (admin costs)	-	(50)	50
Release of reserves	-	(230)	230
Total	(951)	(1,096)	145

Table 1 shows the provisional position for income received and utilised during the year. Interest received on cash balances was higher than expected due to slower than anticipated draw down of Growing Places Fund (GPF). Due to the receipt of interest earned and favourable variance against expenditure it was not been necessary to make the budgeted withdrawal from reserves. It was also not necessary to drawdown GPF revenue grant as the administration costs were funded through the interest receipt. Costs applicable to be funded through the Transport grant were lower than expected and the balance of the grant has been carried forward to 2015/16.

Table 2 - Expenditure

	FY Actual £'000	FY Budget £'000	Over / (Under) £'000
Staffing Costs	338	421	(83)
Consultancy	284	480	(196)
Office & General Expenses	23	130	(107)
Accountable Body Support Costs	55	-	55
Transport Grant Expenditure	45	65	(20)
Total Income	745	1,096	(351)
Net Income / expenditure	(206)	-	(206)

Table 2 shows the provisional position for expenditure incurred during the year. Expenditure was £351K underspent against budget mainly due to delays to recruitment and specific initiatives whilst the delivery review and Assurance Framework were agreed by the Board. The spend for the year equates approximately to the value of the core and transport grants plus interest received.

Operation & Governance

The LEP is governed by a Board of 27 members, appointed through its federal partnerships.

The SE LEP Strategic Board sets the strategic direction of the LEP, championing shared SE LEP priorities. It is the main SE LEP interface with Government, bringing together both private and public sectors to drive local growth and job creation and to oversee all SE LEP activity to deliver this aim.

Formal democratic decision-making is now through the SE LEP Accountability Board which approves all major funding decisions and oversees SE LEP's capital programme for greatest impact, informed by federal area management information and action. The Joint Committee structure of the Accountability Board roots decision-making firmly in the democratic process and enables it to be subject to democratic scrutiny.

Our Federal Partnerships manage funding devolved by the Accountability Board, taking all local decisions on this investment within defined thresholds. Local Area Partnerships/Boards may either be established as Joint Committees in their own right or operate by advising their responsible County/Unitary authority (S151) Finance Director.

As Accountable Body, Essex County Council, retains overall legal accountability for the SE LEP investment programme, supported by Essex's Chief Finance Officer, the S151 officer.

Influencing our economic future

With Growth Deal funding now flowing to local areas, the spotlight rightly turns to scheme delivery, with federal areas strongly in control and with reporting brought together for Government through the SE LEP Accountability Board .

This provides an opportunity for partners to come together to focus on those issues where our collective voice could influence or shape national policy or delivery in the interests of business and growth across East Sussex, Essex, Kent, Medway, Southend and Thurrock.

Work done together should not duplicate that rightly being undertaken on local priorities by federal areas. We should act strategically together to use our size and scale to amplify the voice of all those pursuing growth where there are shared concerns, priorities or opportunities.

As presented to the SE LEP Strategic Board immediate areas include:

- The Lower Thames Crossing – where a co-ordinated business voice is now sought with options soon expected
- Aviation – where we should secure most benefit for our businesses and how best we can support our excellent regional airports in the wake of the Airports Commission
- Our relationship with London - including the potential for a shared position in response to the GLA's Review of the London Plan

Others have also been indentified.

SE LEP Board and Group Structure



SE LEP wishes to thank all councils and businesses, universities and colleges, voluntary sector organisations and social enterprise and our local MPs for their involvement and support over 2014/15.



Visit www.southeastlep.com



Follow us on Twitter @southeastlep

Contact us lep@essex.gov.uk